



**New Park Avenue, Palmers Green, London, N13**  
**Asking Price £625,000 Freehold**

**Anthony Webb**  
ESTATE AGENTS

# New Park Avenue, Palmers Green, London, N13

Well presented extended 1930s built end of terrace house which offers four bedrooms and two bath/shower rooms over three bright and airy floors.

New Park Avenue is a quiet residential turning located between Firs Lane and The Fairway within easy reach of local shops and Palmers Green's shops, restaurants, bus routes and mainline station into Moorgate. Firs Farm Wetlands park and popular primary school are also a short walk away.

Spacious through lounge with bay window and engineered wood floor • Modern kitchen/diner with marble work surfaces, breakfast bar and doors to garden • The first floor consists of two double bedrooms and one single bedroom • Modern family bathroom • The converted loft offers a further double bedroom with eaves storage space and a modern shower room • Double glazing • Gas central heating • block paved drive to front • Landscaped rear garden with summer house measuring 40ft x 22ft.

Council Tax band E

- Four bedrooms
- 1930s end of terrace house
- Through lounge
- Extended kitchen/diner
- Two bath/shower rooms
- Double glazing/gas central heating
- Off street parking
- Rear garden with summer house





# New Park Avenue Palmers Green London N13 5NA

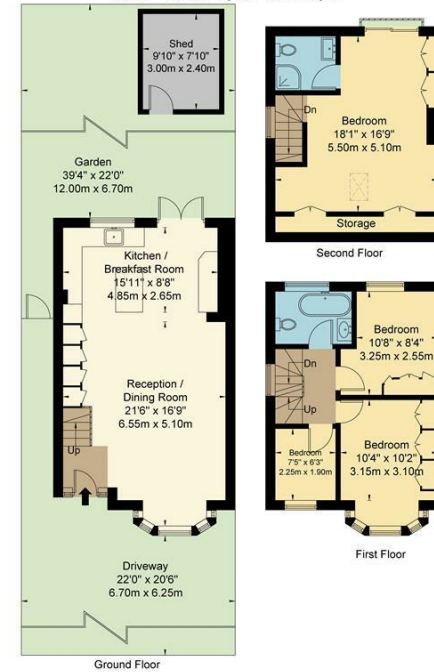
Tenure: Freehold  
Gross Internal Area: 1251.00 sq ft



Energy Efficiency Rating		Current	Potential
Very energy efficient - lower running costs			
(92 plus) A			
(81-91) B			
(69-80) C			
(55-68) D			
(39-54) E			
(21-38) F			
(1-20) G			
Not energy efficient - higher running costs			
England & Wales		EU Directive 2002/91/EC	
Environmental Impact (CO <sub>2</sub> ) Rating		Current	Potential
Very environmentally friendly - lower CO <sub>2</sub> emissions			
(92 plus) A			
(81-91) B			
(69-80) C			
(55-68) D			
(39-54) E			
(21-38) F			
(1-20) G			
Not environmentally friendly - higher CO <sub>2</sub> emissions			
England & Wales		EU Directive 2002/91/EC	

## New Park Avenue, N13 5NA

Approx Gross Internal Area = 116.2 sq m / 1251 sq ft  
Shed = 7.2 sq m / 77 sq ft  
Total = 123.4 sq m / 1328 sq ft



Ref  
Copyright BLEU PLAN  
The Floor plan is not to scale and measurements and areas shown are approximate and therefore should be used for illustrative purposes only. The plan has been prepared in accordance with the RICS code of Measuring Practice and whilst we have confidence in the information produced it must not be relied on. If there is any aspect of particular importance, you should carry out or commission your own inspection of the property.  
Copyright @ BLEUPLAN

Property particulars as supplied by Anthony Webb Estate Agents are set out as a general outline in accordance with the Property Misdescriptions Act (1991) only for the guidance of intending purchasers of lessees, and do not constitute any part of an offer or contract. Details are given without any responsibility, and any intending purchasers, lessees or third parties should not rely on them as inspection or otherwise as to the correctness of each of them. We have not carried out a structural survey and the services, appliances and specific fittings have not been tested. All photographs, measurements, floor plans and distances referred to are given as a guide only and should not be relied upon for the purchase of carpets or any other fixtures statements or representations of fact, but must satisfy themselves by or of fittings, gardens, roof terraces, balconies and communal gardens as well as tenure and lease details cannot have their accuracy guaranteed for intending purchasers. Lease details, service ground rent (where applicable) are given as a guide only and should be checked and confirmed by your solicitor prior to exchange of contracts. no person in the employment of Anthony Webb has any authority to make any representation or warranty whatever in relation to this property.

348 Green Lanes, Palmers Green, London N13 5TJ  
020 8882 7888  
palmersgreen@anthonywebb.co.uk  
anthonywebb.co.uk

**Anthony Webb**  
ESTATE AGENTS